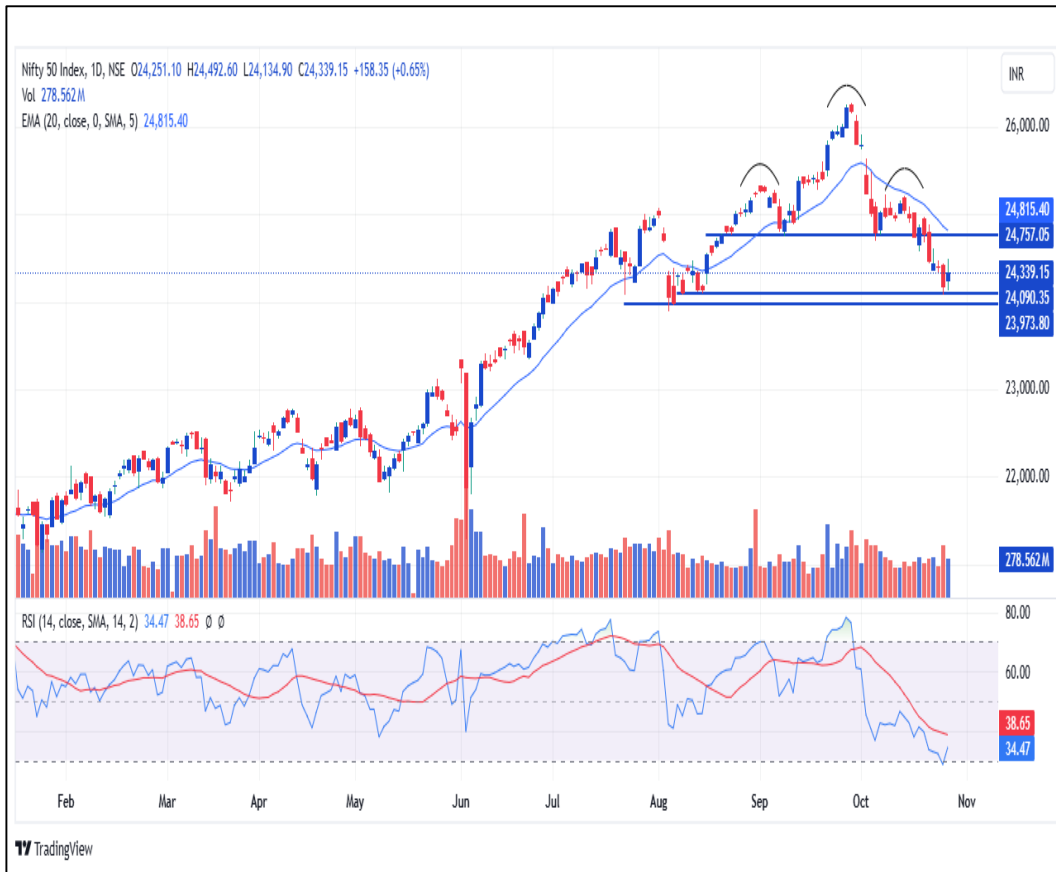


ITI Morning Boost

October 29, 2024

*All price's mentioned in report are based on previous day closing bases.

NIFTY – 24,339.15 (Daily Chart)



- In Monday's trading session, the Nifty rebounded, recovering from Friday's bearish momentum. The index opened on a positive note and gradually moved upward, closing positively after five consecutive sessions of declines.

- On the daily chart, it formed a small bullish candle with equal wicks on both ends, indicating some indecision despite the positive close. The overall trend remains bearish, with the index still forming a lower-low, lower-high pattern. The index continues to trade below the 20 DEMA, and it will need to sustain above this level to signal a potential trend reversal.

- For Tuesday's trading session, 24,290 will act as an initial support level, while 24,490 will serve as an initial resistance level.



BANK NIFTY – 51,259.30 (Daily Chart)



- In Monday's trading session, the banking index opened with a gap up but struggled to maintain its upward momentum, staying within the 51,250-51,580 range throughout the day.
- On the daily chart, it formed a candle with a long upper wick, indicating selling pressure at higher levels. The index continues to face resistance from the 20 DEMA, showing persistent rejection from this level, which is crucial for a bullish turnaround.
- **For Tuesday's trading session, 51,250 will act as an initial support level, while 51,600 will serve as an initial resistance level.**

DIVI S LABORATORIES LTD, 1D, NSE O5,764.90 H5,850.00 L5,707.80 C5,814.40 +33.65 (+0.58%)
Vol 391.605K
EMA (20, close, 0, SMA, 5) 5,778.67

INR

On a daily scale, the stock is holding its bullish structure as it is forming higher high, higher low formation.

Good volume on a bullish candle indicates accumulation of the stock.

RSI gradually moving in the north direction.



6,000.00
5,814.40
5,778.67
5,200.00
4,800.00
4,400.00
4,000.00
3,600.00
3,200.00
391.605K
80.00
68.34
55.87
40.00



BAJAJ AUTO LTD, 1D, NSE O10,206.10 H10,292.75 L9,985.00 C10,011.25 -194.85 (-1.91%)
Vol 340.768 K
EMA (20, close, 0, SMA, 5) 10,944.20

INR



BHARTIARTL : Bharti Airtel's Q2 FY25 net profit surged 167 percent to Rs 3,593 crore from Rs 1,341 crore a year earlier, driven by strong performance in its India and Africa businesses. The company's revenue from operations for the July-September quarter rose 12 percent year-on-year to Rs 41,473 crore.

DRREDDY : The pharma company has launched Elobixibat, a drug to treat chronic constipation, in India. It will market Elobixibat under the brand name BixiBat.

SUZLON : Suzlon Energy Ltd on October 28 reported 96% jump in net profit at Rs 201 crore for the quarter ended September 30, 2024 due to record order wins and robust margins. The renewable energy firm said its revenue rose 48% to Rs 2,093 crore in Q2FY25. The company said its EBITDA rose 31% to Rs 294 crore and order book was at all-time high 5.1 GW including "India's largest wind order from NTPC".

CMP- 1,663.35
IMPACT- **POSITIVE**

CMP- 1311.50
IMPACT- **POSITIVE**

CMP- 70.84
IMPACT- **POSITIVE**



- The Reserve Bank on Monday said an entity seeking authorisation or recognition as a Central Counterparty (CCP) should have a minimum networth of Rs 300 crore at the time of submitting its application. CCP means a system provider by way of novation interposes between system participants in the transactions admitted for settlement. CCP becomes the buyer to every seller and the seller to every buyer for the purpose of effecting settlement of their transactions. The central bank on Monday updated its June 2019 norms for Central Counterparties.
- The WTO's dispute settlement body on Monday again accepted a request from India and Chinese Taipei not to adopt the ruling against New Delhi's import duties on certain information and technology products till April next year, as both sides are engaged in resolving the matter mutually, an official said. The issue came up during a meeting of the dispute settlement body (DSB) in Geneva.

NIFTY50 TOP GAINERS

Company	Price	Change	Gain
Shriram Finance	3,259.30	166.65	5.39
Adani Enterpris	2,798.65	105.20	3.91
ICICI Bank	1,292.85	37.40	2.98
Eicher Motors	4,720.65	129.05	2.81
Wipro	558.60	15.15	2.79

NIFTY50 TOP LOSERS

Company	Price	Change	Gain
Coal India	441.65	-19.45	-4.22
Bajaj Auto	10,011.25	-194.85	-1.91
Axis Bank	1,171.60	-17.75	-1.49
Kotak Mahindra	1,749.85	-19.00	-1.07
Hero Motocorp	4,927.80	-45.50	-0.91

NIFTY200 TOP GAINERS

Company	Price	Change	Gain
Indian Bank	551.45	53	10.60
Bandhan Bank	184.81	16.6	9.87
Poonawalla Fincorp	319.65	22.6	7.61
Canara Bank	100.69	6.46	6.85
IRFC	143.48	9.05	6.74

NIFTY200 TOP LOSERS

Company	Price	Change	Gain
InterGlobe	4,015	-351	-8.04
Chola Inv Finance	1,280	-91.86	-6.70
Torrent Power	1,829	-94.75	-4.93
CG Power & Ind.	711.9	-31.61	-4.26
Coal India Ltd	441.65	-19.46	-4.22

OPEN INTEREST GAINERS

OPEN INTEREST LOSERS

Symbol	Price	Change	Change	Open Interest	Open Int Chg
DRREDDY	1309.25	-5197.70	-79.88	64,17,500	249.73
RELIANCE	1334.75	-1322.90	-49.78	10,04,79,000	73.88

Symbol	Price	Change	Change	Open Interest	Open Int Chg
JUBLFOOD	587.30	0.05	0.01	82,23,750	-50.25
BATAINDIA	1374.40	8.25	0.60	17,77,125	-45.99
ALKEM	6042.15	101.65	1.71	9,72,200	-45.56
LICHSGFIN	649.25	19.30	3.22	1,32,13,000	-45.47
AUBANK	620.00	14.25	2.35	96,43,000	-43.23

INDEX HIGHEST OI

F&O Ban list	
DIXON	MANAPPURAM
ESCORTS	PNB
IDFCFIRSTB	RBLBANK
INDIAMART	
LTF	

Monthly exp	Indices	Highest CE strike	Highest PE strike	PCR OI
31/10/24	NIFTY	25,000	24,000	0.84
30/10/24	BANKNIFTY	62,000	50,000	0.75



FII & DII TRADING ACTIVITY CASH

Date	FII Rs Crores			DII Rs Crores		
	Gross Purchase	Gross Sales	Net Purchase / Sales	Gross Purchase	Gross Sales	Net Purchase / Sales
Month till date	2,52,209.76	3,55,680.01	-1,03,470.25	3,00,741.27	2,02,249.59	98,491.68
28-Oct-24	13,393.30	16,621.38	-3,228.08	12,258.32	10,857.47	1,400.85
25-Oct-24	14,209.84	17,246.59	-3,036.75	15,203.44	11,044.15	4,159.29
24-Oct-24	12,537.42	17,599.87	-5,062.45	13,827.85	10,207.38	3,620.47
23-Oct-24	14,752.71	20,437.34	-5,684.63	16,433.67	10,393.77	6,039.90

FII & DII TRADING ACTIVITY STOCK F&O

Date	FII Stock Fut			FII Stock Opt		
	Gross Purchase	Gross Sales	Net Purchase / Sales	Gross Purchase	Gross Sales	Net Purchase / Sales
Month till date	687766.87	679005.34	8761.53	1133582.17	1167363.15	-33780.98
28-Oct-24	1,27,566.86	1,24,231.71	3,335.15	80,704.79	80,189.53	515.26
25-Oct-24	49,031.38	44,965.79	4,065.59	96,972.12	99,239.62	-2,267.50
24-Oct-24	34,170.81	31,422.47	2,748.34	75,773.04	74,891.43	881.61
23-Oct-24	38,018.21	31,493.98	6,524.23	87,627.00	87,319.56	307.44



*Data in above table is based on previous day closing bases.

TOP SECTORS PERFORMANCE OF THE DAY

Name	Daily (%)	1 Week (%)	1 Month (%)	3 Months (%)	6 Months (%)	1 Year (%)
Agro Chemicals	2.73	-2.95	-5.33	-4.83	14.85	23.87
Non Ferrous Metals	2.57	-7.6	-4.37	8.9	33.04	91.87
Diamond, Gems and Jewelle...	2.37	-5.23	-3.84	31.7	56.26	105.74
Dry cells	2.29	-4.31	-11.42	-8.59	-7.63	-0.44
Alcoholic Beverages	2.27	-2.74	-8.8	0.45	13.71	35.19



Result calendar for F&O stocks

29-10-2024	30-10-2024
ADANIENT	ABCAPITAL
ADANIPORTS	BIOCON
CANBK	DABUR
CIPLA	LT
MARICO	TATAPOWER
MARUTI	
SBICARD	



UPCOMING ECONOMIC EVENTS

Tuesday, October 29, 2024	Country	Event's	Forecast		Previous
19:30	US	CB Consumer Confidence (Oct)			98.7
19:30	US	JOLTS Job Openings (Sep)			8.040M
Wednesday, October 30, 2024					
14:30	EU	German GDP (QoQ) (Q3)			-0.1
15:00	CH	SNB Press Conference			
15:30	GB	Autumn Forecast Statement			
17:45	US	ADP Nonfarm Employment Change (Oct)			
18:00	US	GDP (QoQ) (Q3)	3.0		3.0
18:30	EU	German CPI (MoM) (Oct)	0.2		0.0
20:00	US	Crude Oil Inventories			5.474M

Disclaimer

This report has been prepared by ITI Securities Broking Limited (hereinafter referred to as ITISBL) to provide information about the company(ies) and/or sector(s), if any, covered in the report and may be distributed by it and/or its affiliated company(ies). ITISBL is a Stock Broker and Depository Participant registered with and regulated by Securities & Exchange Board of India. ITISBL and its affiliates are a full-service, integrated investment banking, investment management, brokerage and financing group.

This report is for personal information of the selected recipient/s and does not constitute to be any investment, legal or taxation advice to you. This research report does not constitute an offer, invitation or inducement to invest in securities or other investments and ITISBL is not soliciting any action based upon it. This report is not for public distribution and has been furnished to you solely for your general information and should not be reproduced or redistributed to any other person in any form. This report does not constitute a personal recommendation or take into account the particular investment objectives, financial situations, or needs of individual clients. Before acting on any advice or recommendation in this material, investors should consider whether it is suitable for their particular circumstances and, if necessary, seek professional advice. The price and value of the investments referred to in this material and the income from them may go down as well as up, and investors may realize losses on any investments. Past performance is not a guide for future performance, future returns are not guaranteed and a loss of original capital may occur. We and our affiliates have investment banking and other business relationships with a some companies covered by our Research Department. Our research professionals may provide input into our investment banking and other business selection processes. Investors should assume that ITISBL and/or its affiliates are seeking or will seek investment banking or other business from the company or companies that are the subject of this material and that the research professionals who were involved in preparing this material may educate investors on investments in such business. The research professionals responsible for the preparation of this document may interact with trading desk personnel, sales personnel and other parties for the purpose of gathering, applying and interpreting information. Our research professionals are paid on the profitability of ITISBL which may include earnings from investment banking and other business.

ITISBL generally prohibits its analysts, persons reporting to analysts, and members of their households from maintaining a financial interest in the securities or derivatives of any companies that the analysts cover. Additionally, ITISBL generally prohibits its analysts and persons reporting to analysts from serving as an officer, director, or advisory board member of any companies that the analysts cover. Our salespeople, traders, and other professionals or affiliates may provide oral or written market commentary or trading strategies to our clients that reflect opinions that are contrary to the opinions expressed herein, and our proprietary trading and investing businesses may make investment decisions that are inconsistent with the recommendations expressed herein. In reviewing these materials, you should be aware that any or all of the foregoing among other things, may give rise to real or potential conflicts of interest. ITISBL and its affiliated company(ies), their directors and employees and their relatives may; (a) from time to time, have a long or short position in, act as principal in, and buy or sell the securities or derivatives thereof of companies mentioned herein. (b) be engaged in any other transaction involving such securities and earn brokerage or other compensation or act as a market maker in the financial instruments of the company(ies) discussed herein or act as an advisor or lender/borrower to such company(ies) or may have any other potential conflict of interests with respect to any recommendation and other related information and opinions; however the same shall have no bearing whatsoever on the specific recommendations made by the analyst(s), as the recommendations made by the analyst(s) are completely independent of the views of the affiliates of ITISBL even though there might exist an inherent conflict of interest in some of the stocks mentioned in the research report. Reports based on technical and derivative analysis center on studying charts company's price movement, outstanding positions and trading volume, as opposed to focusing on a company's fundamentals and, as such, may not match with a report on a company's fundamental analysis. In addition ITISBL has different business segments / Divisions with independent research separated by Chinese walls catering to different set of customers having various objectives, risk profiles, investment horizon, etc, and therefore may at times have different contrary views on stocks sectors and markets.

Unauthorized disclosure, use, dissemination or copying (either whole or partial) of this information, is prohibited. The person accessing this information specifically agrees to exempt ITISBL or any of its affiliates or employees from, any and all responsibility/liability arising from such misuse and agrees not to hold ITISBL or any of its affiliates or employees responsible for any such misuse and further agrees to hold ITISBL or any of its affiliates or employees free and harmless from all losses, costs, damages, expenses that may be suffered by the person accessing this information due to any errors and delays. The information contained herein is based on publicly available data or other sources believed to be reliable. Any statements contained in this report attributed to a third party represent ITISBL's interpretation of the data, information and/or opinions provided by that third party either publicly or through a subscription service, and such use and interpretation have not been reviewed by the third party. This Report is not intended to be a complete statement or summary of the securities, markets or developments referred to in the document. While we would endeavour to update the information herein on reasonable basis, ITISBL and/or its affiliates are under no obligation to update the information. Also there may be regulatory, compliance, or other reasons that may prevent ITISBL and/or its affiliates from doing so. ITISBL or any of its affiliates or employees shall not be in any way responsible and liable for any loss or damage that may arise to any person from any inadvertent error in the information contained in this report. ITISBL or any of its affiliates or employees do not provide, at any time, any express or implied warranty of any kind, regarding any matter pertaining to this report, including without limitation the implied warranties of merchantability, fitness for a particular purpose, and non-infringement. The recipients of this report should rely on their own investigations. This report is intended for distribution to investors. Recipients who are not investors should seek advice of their independent financial advisor prior to taking any investment decision based on this report or for any necessary explanation of its contents ITISBL and its associates may have managed or co-managed public offering of securities, may have received compensation for investment banking or merchant banking or brokerage services, may have received any compensation for products or services other than investment banking or merchant banking or brokerage services from the subject company in the past 12 months. ITISBL and its associates have not received any compensation or other benefits from the subject company or third party in connection with the research report. Subject Company may have been a client of ITISBL or its associates during twelve months preceding the date of distribution of the research report. ITISBL and/or its affiliates and/or Research analyst / or relative of research analyst or Employees may have interests/positions, financial or otherwise of over 1 at the end of the month immediately preceding the date of publication of the research in the securities mentioned in this report. To enhance transparency, ITISBL has incorporated a Disclosure of Interest Statement in this document. This should, however, not be treated as endorsement of the views expressed in the report. Neither the Research Analysts nor ITISBL have been engaged in market making activity for the companies mentioned in the report. ITISBL and/or its affiliates and/or Research analyst/ relative of research analyst have not any material conflict of interest at the time of publication of this report. There are no material disciplinary action that been taken by any regulatory authority impacting equity research analysis activities Please ensure that you have read "Risk Disclosure Document for Capital Market and Derivatives Segments" as prescribed by Securities and Exchange Board of India before investing in Indian Securities Market. In so far as this report includes current or historic information, it is believed to be reliable, although its accuracy and completeness cannot be guaranteed.

Analyst Certification

The views expressed in this research report accurately reflect the personal views of the analyst(s) about the subject securities or issues, and no part of the compensation of the research analyst(s) was, is, or will be directly or indirectly related to the specific recommendations and views expressed by research analyst(s) in this report. The research analysts, strategists, or research associates principally responsible for preparation of ITISBL research receive compensation based upon various factors, including quality of research, investor client feedback, stock picking, competitive factors and firm revenues

Disclosure of Interest Statement - Companies where there is interest

Analyst ownership of the stock: No

Served as an officer, director or employee: No

Regional Disclosures (outside India)

This report is not directed or intended for distribution to or use by any person or entity resident in a state, country or any jurisdiction, where such distribution, publication, availability or use would be contrary to law, regulation or which would subject ITISBL & its group companies to registration or licensing requirements within such jurisdictions.

ITI Securities Broking Limited

SEBI – Research Analyst REG. NO. : INH000001535

SEBI REG. NO: NSE&BSE: INZ000005835, CDSL-IN-DP-70-2015, AMFI Reg. No. ARN-12576,

CIN NO: U74120MH1994PLC077946

ITI House, 36, Dr. R. K. Shirodkar Road,

Parel, Mumbai - 400 012,

Boardline - (91) 22 69093600 Fax- 022 69093700

For queries, write to us at iti.research@itiorg.com