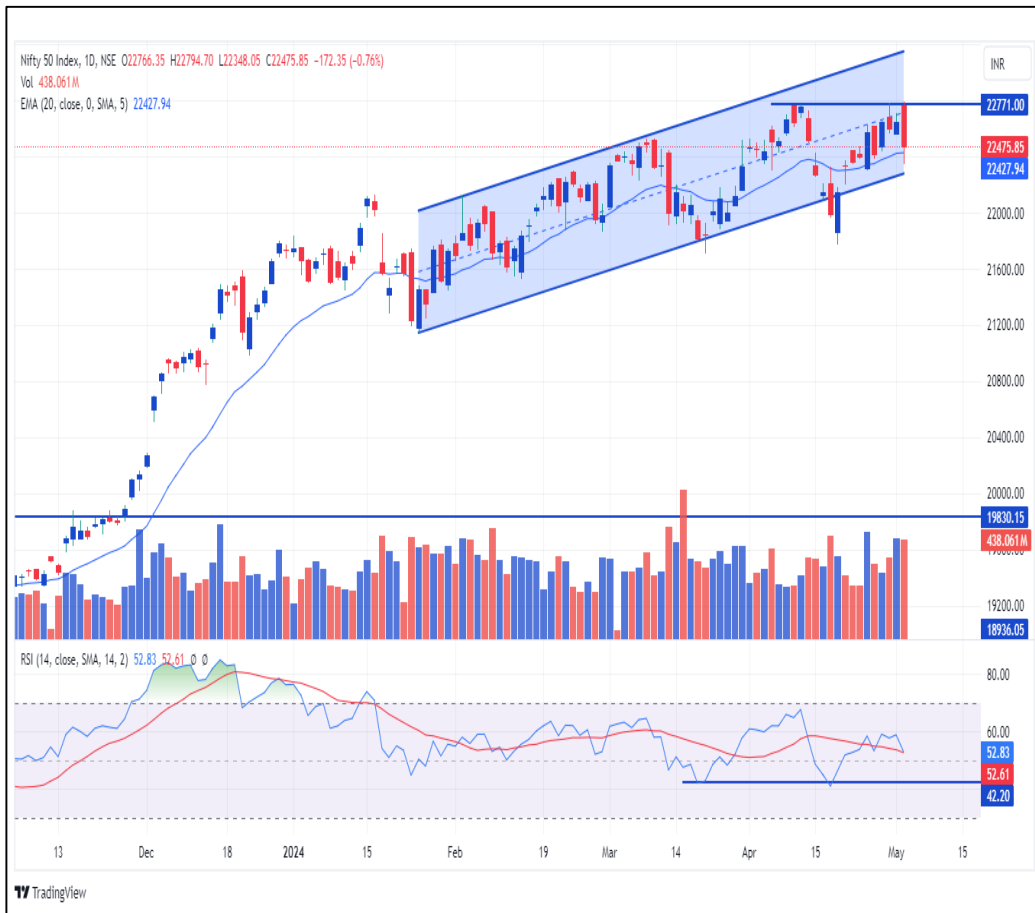


ITI Morning Boost

May 06, 2024

*All price's mentioned in report are based on previous day closing bases.

NIFTY – 22,475.85 (Daily Chart)



• In Friday's trading session, the nifty opened with the gap up with 100+ points but it failed to sustain at the higher levels. The bears took over the index and witnessed a steep correction of approx 400 points from the day's high levels which led to negative closing for the day.

• On a daily scale, the index has formed a strong bearish candle at the horizontal resistance of 22,780 levels. It has formed a bearish engulfing pattern which indicates a possible reversal in trend. The index did breach the support of 20 DEMA but managed to close above it. RSI gradually moving in the south direction indicates weakness in the index.

• For Monday's trading session, 22,430 will act as an initial support level, and on the higher end, 22,550 will act as an initial resistance level.



BANKNIFTY – 48,923.55 (Daily Chart)



• In Friday's trading session, the banking index opened with the gap up similar to the main index, and then it failed to sustain at the higher levels which helped the index to close the gap. The index continued to move in the south direction which resulted in a negative closing for the third consecutive trading session.

• On a daily scale, the index has formed a bearish candle but managed to hold the support of 20 DEMA. RSI is gradually moving in the south direction which is a cautious sign for the bulls.

• For Monday's trading session, **49,130** will act as an initial resistance level and on the lower end, **48,830** will act as an initial support level.



COALINDIA CMP- 474.60 (Daily Chart)

BUY ABOVE 475 SL 470 TGT 485





TITAN: The jewellery and watch maker recorded a standalone net profit of Rs 786 crore for the quarter ended March FY24, growing 7.1 percent over the corresponding period of the previous fiscal year, impacted by a weak operating margin. Revenue from operations for the quarter, at Rs 11,257 crore, increased by 16 percent over the same period in the in the previous fiscal.

TATAPOWER: Subsidiary Tata Power Renewable Energy has signed a power purchase agreement with PSU company SJVN to set up a 460 MW Firm and Dispatchable Renewable Energy (FDRE) project.

DRREDDY: The pharma company launched Doxycycline capsules, 40 mg, in the US market. The drug is a therapeutic generic equivalent of Oracea capsules approved by the US Food and Drug Administration. Doxycycline capsules are used for the treatment of infections caused by bacteria.

DMART: The D-Mart operator has recorded consolidated net profit of Rs 563.3 crore for the March FY24 quarter, growing 22.4 percent over the same period in the in the previous fiscal year, with healthy topline and operating numbers. Revenue from operations grew by 20.1 percent year over year to Rs 12,726.6 crore for the quarter.

CMP- 3533.90
IMPACT- **NEUTRAL**

CMP- 454.75
IMPACT- **POSITIVE**

CMP- 6349.55
IMPACT- **POSITIVE**

CMP- 4612.35
IMPACT- **POSITIVE**



- India on Sunday urged the Asian Development Bank (ADB) not to overlook its focus on reduction of remaining poverty while promoting sustainable growth for the member nations in the Asia Pacific region. Making intervention at the Board of Governors Business Session at the 57th Annual Meeting of ADB, India's Temporary Alternate Governor Vikas Sheel said the bank has played a critical role in facilitating measures of faster economic development, reducing poverty and promoting regional cooperation while effectively addressing the challenges and delivery of global public goods.
- India and Ghana are working to link their payment systems - Unified Payments Interface (UPI) and Ghana Interbank Payment and Settlement Systems (GHIPSS) respectively to permit users to make instant, low-cost fund transfers on a reciprocal basis. The two countries have also delved into discussions regarding the possibilities of a Memorandum of Understanding on Digital transformation Solutions; Local Currency Settlement System and the opportunities offered by African Continental Free Trade Agreement (AfCFTA). "They agreed to work expeditiously towards the operationalisation of NPCI's (National Payments Corporation of India) UPI on Ghana's GHIPSS within a period of 6 months," the Department of Commerce said on the social media platform X (formerly twitter).

NIFTY50 TOP GAINERS

Company	Price	Change	%Gain
Coal India	474.60	20.70	4.56
Grasim	2,481.35	44.00	1.81
ONGC	286.10	3.30	1.17
Dr Reddys Labs	6,349.55	62.05	0.99
Hindalco	647.10	5.65	0.88

NIFTY50 TOP LOSERS

Company	Price	Change	%Gain
Larsen	3,499.80	-99.70	-2.77
Maruti Suzuki	12,492.15	-313.20	-2.45
Nestle	2,456.10	-56.20	-2.24
Reliance	2,868.00	-65.10	-2.22
Bharti Airtel	1,277.40	-26.65	-2.04

NIFTY200 TOP GAINERS

Company	Price	Change	%Gain
Hind Zinc	470.1	38	8.79
Coal India	474.6	20.7	4.56
Prestige Estate	1,460.60	59.75	4.27
BHEL	305	12.3	4.2
Shree Cements	25,746.55	919.35	3.7

NIFTY200 TOP LOSERS

Company	Price	Change	%Gain
COFORGE LTD.	4,482.55	-503.15	-10.09
MRF	1,28,560.40	-5,301.55	-3.96
SRF	2,567.65	-101.4	-3.8
Oberoi Realty	1,472.45	-56.9	-3.72
Aditya Birla F	254.15	-9.7	-3.68



OPEN INTEREST GAINERS

OPEN INTEREST LOSERS

Symbol	Price	Change	Change%	Open Interest	Open Int Chg %
COFORGE	4521.20	-495.65	-9.91	32,69,400	45.77%
MRF	134550	-6940.30	-5.15	61,030	25.41%
NAVINFLUOR	3481	8.90	0.26	26,49,750	16.80%
SHREECEM	25200	887.80	3.54	3,87,325	11.05%
BAJFINANCE	7280	25.40	0.37	84,71,750	9.69%

Symbol	Price	Change	Change%	Open Interest	Open Int Chg %
ABBOTINDIA	26906.65	-632.80	-2.35	1,75,940	-10.64%
HAVELLS	1690.30	-2.55	-0.15	61,93,500	-9.83%
DABUR	539.65	1.70	0.32	2,07,06,250	-9.15%
IPCALAB	1361.40	-16.45	-1.21	16,71,150	-7.22%
OFSS	7870	17.35	0.22	10,15,700	-7.18%

INDEX HIGHEST OI

F&O Ban list
ABFRL
BALRAMCHIN
BIOCON
GMRINFRA
IDEA

Monthly exp	Indices	Highest CE strike	Highest PE strike	PCR OI
30/05/24	NIFTY	23,500	22,000	1.29
29/05/24	BANKNIFTY	49,000	48,000	0.97



FII & DII TRADING ACTIVITY CASH

Date	FII Rs Crores			DII Rs Crores		
	Gross Purchase	Gross Sales	Net Purchase / Sales	Gross Purchase	Gross Sales	Net Purchase / Sales
Month till date	34,226.88	37,583.33	-3,356.45	28,988.25	26,945.29	2,042.96
03-May-24	17,440.08	19,832.06	-2,391.98	13,865.92	13,175.40	690.52
02-May-24	16,786.80	17,751.27	-964.47	15,122.33	13,769.89	1,352.44

FII & DII TRADING ACTIVITY STOCK F&O

Date	FII Stock Fut			FII Stock Opt		
	Gross Purchase	Gross Sales	Net Purchase / Sales	Gross Purchase	Gross Sales	Net Purchase / Sales
Month till date	66351.84	69378.28	-3026.44	81256.26	80000.12	1256.14
03-May-24	30,692.97	38,882.52	-8,189.55	44,237.47	43,097.10	1,140.37
02-May-24	35,658.87	30,495.76	5,163.11	37,018.79	36,903.02	115.77



TOP SECTORS PERFORMANCE OF THE DAY

Name	Daily (%)	1 Week (%)	1 Month (%)	3 Months (%)	6 Months (%)	1 Year (%)
Power Infrastructure	5.33	-6.65	12	27.46	223.53	477.78
Refractories	1.27	2.64	16.18	4.06	18.26	111.46
Credit Rating Agencies	1.23	-0.25	-3.5	1.44	14.72	37.71
Mining & Mineral products	0.94	1.62	14.63	4.61	40.62	112.56
Oil Drill/Allied	0.86	8.37	41.34	76.9	373.2	2,126.38



Result calendar for F&O stocks

03-05-2024	04-05-2024	06-05-2024	07-05-2024	08-05-2024
BRITANNIA	KOTAKBANK	GUJGASLTD	CHAMBLFERT	BHARATFORG
GODREJPROP	M&MFIN	LUPIN	DRREDDY	CANBK
MRF		MARICO	NAVINFLUOR	HEROMOTOCO
			PIDILITIND	LT
			UBL	PEL
			VOLTAS	TATAPOWER
				TVSMOTOR



UPCOMING ECONOMIC EVENTS

Tuesday, May 07, 2024	Country	Event's	Forecast		Previous
07:00	AU	Retail Sales (MoM)	-0.4%		0.3%
10:00	AU	RBA Interest Rate Decision (May)			4.35%
11:00	AU	RBA Rate Statement			
14:00	GB	Construction PMI (Apr)			50.2
19:00	CA	Ivey PMI (Apr)			57.5
Thursday, May 09, 2024					
16:30	GB	BoE Interest Rate Decision (Apr)	5.25		5.25
16:30	GB	BoE MPC Meeting Minutes			
17:00	GB	BoE Gov Bailey Speaks			
18:00	US	Initial Jobless Claims			208K

Disclaimer

This report has been prepared by ITI Securities Broking Limited (hereinafter referred to as ITISBL) to provide information about the company(ies) and/or sector(s), if any, covered in the report and may be distributed by it and/or its affiliated company(ies). ITISBL is a Stock Broker and Depository Participant registered with and regulated by Securities & Exchange Board of India. ITISBL and its affiliates are a full-service, integrated investment banking, investment management, brokerage and financing group.

This report is for personal information of the selected recipient/s and does not constitute to be any investment, legal or taxation advice to you. This research report does not constitute an offer, invitation or inducement to invest in securities or other investments and ITISBL is not soliciting any action based upon it. This report is not for public distribution and has been furnished to you solely for your general information and should not be reproduced or redistributed to any other person in any form. This report does not constitute a personal recommendation or take into account the particular investment objectives, financial situations, or needs of individual clients. Before acting on any advice or recommendation in this material, investors should consider whether it is suitable for their particular circumstances and, if necessary, seek professional advice. The price and value of the investments referred to in this material and the income from them may go down as well as up, and investors may realize losses on any investments. Past performance is not a guide for future performance, future returns are not guaranteed and a loss of original capital may occur. We and our affiliates have investment banking and other business relationships with a some companies covered by our Research Department. Our research professionals may provide input into our investment banking and other business selection processes. Investors should assume that ITISBL and/or its affiliates are seeking or will seek investment banking or other business from the company or companies that are the subject of this material and that the research professionals who were involved in preparing this material may educate investors on investments in such business. The research professionals responsible for the preparation of this document may interact with trading desk personnel, sales personnel and other parties for the purpose of gathering, applying and interpreting information. Our research professionals are paid on the profitability of ITISBL which may include earnings from investment banking and other business.

ITISBL generally prohibits its analysts, persons reporting to analysts, and members of their households from maintaining a financial interest in the securities or derivatives of any companies that the analysts cover. Additionally, ITISBL generally prohibits its analysts and persons reporting to analysts from serving as an officer, director, or advisory board member of any companies that the analysts cover. Our salespeople, traders, and other professionals or affiliates may provide oral or written market commentary or trading strategies to our clients that reflect opinions that are contrary to the opinions expressed herein, and our proprietary trading and investing businesses may make investment decisions that are inconsistent with the recommendations expressed herein. In reviewing these materials, you should be aware that any or all of the foregoing among other things, may give rise to real or potential conflicts of interest. ITISBL and its affiliated company(ies), their directors and employees and their relatives may; (a) from time to time, have a long or short position in, act as principal in, and buy or sell the securities or derivatives thereof of companies mentioned herein. (b) be engaged in any other transaction involving such securities and earn brokerage or other compensation or act as a market maker in the financial instruments of the company(ies) discussed herein or act as an advisor or lender/borrower to such company(ies) or may have any other potential conflict of interests with respect to any recommendation and other related information and opinions; however the same shall have no bearing whatsoever on the specific recommendations made by the analyst(s), as the recommendations made by the analyst(s) are completely independent of the views of the affiliates of ITISBL even though there might exist an inherent conflict of interest in some of the stocks mentioned in the research report. Reports based on technical and derivative analysis center on studying charts company's price movement, outstanding positions and trading volume, as opposed to focusing on a company's fundamentals and, as such, may not match with a report on a company's fundamental analysis. In addition ITISBL has different business segments / Divisions with independent research separated by Chinese walls catering to different set of customers having various objectives, risk profiles, investment horizon, etc, and therefore may at times have different contrary views on stocks sectors and markets.

Unauthorized disclosure, use, dissemination or copying (either whole or partial) of this information, is prohibited. The person accessing this information specifically agrees to exempt ITISBL or any of its affiliates or employees from, any and all responsibility/liability arising from such misuse and agrees not to hold ITISBL or any of its affiliates or employees responsible for any such misuse and further agrees to hold ITISBL or any of its affiliates or employees free and harmless from all losses, costs, damages, expenses that may be suffered by the person accessing this information due to any errors and delays. The information contained herein is based on publicly available data or other sources believed to be reliable. Any statements contained in this report attributed to a third party represent ITISBL's interpretation of the data, information and/or opinions provided by that third party either publicly or through a subscription service, and such use and interpretation have not been reviewed by the third party. This Report is not intended to be a complete statement or summary of the securities, markets or developments referred to in the document. While we would endeavour to update the information herein on reasonable basis, ITISBL and/or its affiliates are under no obligation to update the information. Also there may be regulatory, compliance, or other reasons that may prevent ITISBL and/or its affiliates from doing so. ITISBL or any of its affiliates or employees shall not be in any way responsible and liable for any loss or damage that may arise to any person from any inadvertent error in the information contained in this report. ITISBL or any of its affiliates or employees do not provide, at any time, any express or implied warranty of any kind, regarding any matter pertaining to this report, including without limitation the implied warranties of merchantability, fitness for a particular purpose, and non-infringement. The recipients of this report should rely on their own investigations. This report is intended for distribution to investors. Recipients who are not investors should seek advice of their independent financial advisor prior to taking any investment decision based on this report or for any necessary explanation of its contents ITISBL and its associates may have managed or co-managed public offering of securities, may have received compensation for investment banking or merchant banking or brokerage services, may have received any compensation for products or services other than investment banking or merchant banking or brokerage services from the subject company in the past 12 months. ITISBL and its associates have not received any compensation or other benefits from the subject company or third party in connection with the research report. Subject Company may have been a client of ITISBL or its associates during twelve months preceding the date of distribution of the research report. ITISBL and/or its affiliates and/or Research analyst / or relative of research analyst or Employees may have interests/positions, financial or otherwise of over 1% at the end of the month immediately preceding the date of publication of the research in the securities mentioned in this report. To enhance transparency, ITISBL has incorporated a Disclosure of Interest Statement in this document. This should, however, not be treated as endorsement of the views expressed in the report. Neither the Research Analysts nor ITISBL have been engaged in market making activity for the companies mentioned in the report. ITISBL and/or its affiliates and/or Research analyst/ relative of research analyst have not any material conflict of interest at the time of publication of this report. There are no material disciplinary action that been taken by any regulatory authority impacting equity research analysis activities Please ensure that you have read "Risk Disclosure Document for Capital Market and Derivatives Segments" as prescribed by Securities and Exchange Board of India before investing in Indian Securities Market. In so far as this report includes current or historic information, it is believed to be reliable, although its accuracy and completeness cannot be guaranteed.

Analyst Certification

The views expressed in this research report accurately reflect the personal views of the analyst(s) about the subject securities or issues, and no part of the compensation of the research analyst(s) was, is, or will be directly or indirectly related to the specific recommendations and views expressed by research analyst(s) in this report. The research analysts, strategists, or research associates principally responsible for preparation of ITISBL research receive compensation based upon various factors, including quality of research, investor client feedback, stock picking, competitive factors and firm revenues

Disclosure of Interest Statement - Companies where there is interest

Analyst ownership of the stock: No

Served as an officer, director or employee: No

Regional Disclosures (outside India)

This report is not directed or intended for distribution to or use by any person or entity resident in a state, country or any jurisdiction, where such distribution, publication, availability or use would be contrary to law, regulation or which would subject ITISBL & its group companies to registration or licensing requirements within such jurisdictions.

ITI Securities Broking Limited

SEBI – Research Analyst REG. NO. : INH000001535

SEBI REG. NO: NSE&BSE: INZ000005835, CDSL-IN-DP-70-2015, AMFI Reg. No. ARN-12576,

CIN NO: U74120MH1994PLC077946

ITI House, 36, Dr. R. K. Shirodkar Road,

Parel, Mumbai - 400 012,

Boardline - (91) 22 69093600 Fax- 022 69093700

For queries, write to us at iti.research@itiorg.com